



- ▶ **QUENCHED & TEMPERED ALLOY STEEL 130,000 psi MIN. YIELD, 360 - 440 BHN IS USED IN CUTTING EDGE, LOWER SIDECUTTER SECTIONS, WEAR STRIPS & SIDE WEAR PLATES**
- ▶ **UNIQUE WEAR STRIP CONFIGURATION, AFFORDS THE BEST POSSIBLE PROTECTION TO THE BOTTOM OF THE BUCKET**
- ▶ **WHILE OFTEN COPIED BUT NEVER DUPLICATED, THE LEMAC HEAVY TUBE SECTION DESIGN FORMS THE TOP BEAM OF THE BUCKET PROVIDING AN EXTREMELY SOLID BASE FOR THE MOUNTING EARS. CORNER GUSSETS INSURE RIGIDITY IS MAINTAINED FOR LONG BUCKET LIFE**
- ▶ **ALL TRENCHING WIDTH BUCKETS ARE TAPERED TOP TO BOTTOM & FRONT TO BACK**
- ▶ **AGGRESSIVELY SHAPED TO PROMOTE EASY PENETRATION & CLEAN FAST DUMPING**
- ▶ **LOWER SIDECUTTER SECTIONS ARE DRILLED & COUNTERSUNK TO ACCEPT SIDECUTTERS OR OTHER OPTIONS**
- ▶ **OFFERED WITH A WIDE VARIETY OF TOOTH SYSTEMS INCLUDING CAT STYLE, HENSLEY, & ESCO ETC.**
- ▶ **MANUFACTURED IN VIRGINIA, USA & SCOTLAND, UK**

# Medium Duty ~ Heavy Duty ~ Severe Duty

**LIGHT WEIGHT**

**UNIVERSAL JOBSITE USE**

**ROCK HANDLING**

**MILD WEAR N' TEAR**

**HARDOX PROTECTION**

**THICKER WEAR PLATES**

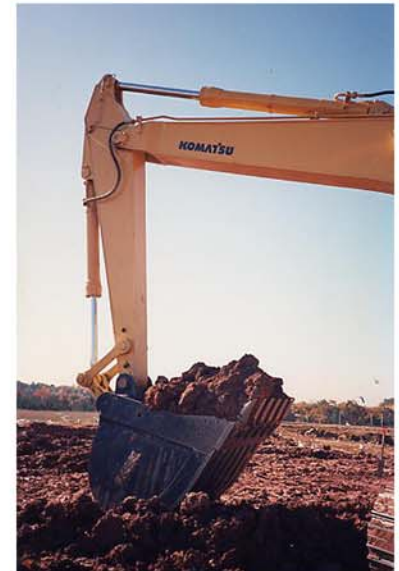
**MODERATE WEAR N' TEAR**

**HARDOX PROTECTION**

**SEVERE WEAR N' TEAR**



| MODEL        | WIDTH   |               | CAPACITY       |               | MACHINE SIZE     |                 |
|--------------|---------|---------------|----------------|---------------|------------------|-----------------|
|              | INCH    | MILLIMETER    | YARD 3         | METER 3       | POUND            | KILOGRAM        |
| MD/HD/SD 12  | 18 = 48 | 457 = 1,219   | 0.312 = 1.059  | 0.285 = 0.968 | 24,500 = 30,500  | 11,113 = 13,835 |
| MD/HD/SD 15  | 18 = 60 | 457 = 1,524   | 0.375 = 1.620  | 0.343 = 1.481 | 30,500 = 40,000  | 13,835 = 18,144 |
| MD/HD/SD 18  | 24 = 48 | 610 = 1,219   | 0.584 = 1.372  | 0.534 = 1.255 | ??? = ???        | ??? = ???       |
| MD/HD/SD 21  | 18 = 72 | 457 = 1,829   | 0.467 = 2.538  | 0.427 = 2.321 | 40,000 = 50,000  | 18,144 = 22,680 |
| MD/HD/SD 25  | 24 = 66 | 610 = 1,676   | 0.773 = 2.642  | 0.707 = 2.416 | 50,000 = 58,000  | 22,680 = 26,308 |
| MD/HD/SD 28  | 24 = 54 | 610 = 1,372   | 0.846 = 2.367  | 0.774 = 2.164 | 58,000 = 68,000  | 26,308 = 30,844 |
| MD/HD/SD 29  | 24 = 72 | 610 = 1,829   | 0.836 = 3.217  | 0.764 = 2.942 | ??? = ???        | ??? = ???       |
| MD/HD/SD 30  | 24 = 72 | 610 = 1,829   | 0.885 = 3.523  | 0.809 = 3.221 | 68,000 = 85,000  | 30,844 = 38,555 |
| MD/HD/SD 40  | 30 = 75 | 762 = 1,905   | 1.356 = 4.245  | 1.240 = 3.882 | 85,000 = 104,000 | 38,555 = 47,174 |
| MD/HD/SD 45  | 42 = 84 | 1,067 = 2,134 | 2.305 = 5.728  | 2.108 = 5.238 | ??? = ???        | ??? = ???       |
| MD/HD/SD 50  | 30 = 78 | 762 = 1,981   | ??? = 5.199    | ??? = 4.754   | ??? = ???        | ??? = ???       |
| MD/HD/SD 55  | 42 = 75 | 1,067 = 1,905 | ??? = 4.981    | ??? = 4.555   | ??? = ???        | ??? = ???       |
| MD/HD/SD 60  | 36 = 66 | 914 = 1,676   | 2.424 = 4.974  | 2.217 = 4.548 | ??? = ???        | ??? = ???       |
| MD/HD/SD 65  | 36 = 84 | 914 = 2,134   | 2.446 = 6.613  | 2.237 = 6.047 | ??? = ???        | ??? = ???       |
| MD/HD/SD 70  | 42 = 78 | 1,067 = 1,981 | 2.951 = 6.095  | 2.698 = 5.573 | ??? = ???        | ??? = ???       |
| MD/HD/SD 75  | 42 = 85 | 1,067 = 2,159 | 3.285 = 7.546  | 3.004 = 6.900 | ??? = ???        | ??? = ???       |
| MD/HD/SD 80  | 42 = 74 | 1,067 = 1,880 | 3.623 = 7.105  | 3.313 = 6.497 | ??? = ???        | ??? = ???       |
| MD/HD/SD 110 | 54 = 96 | 1,372 = 2,438 | 5.189 = 10.181 | 4.745 = 9.310 | ??? = ???        | ??? = ???       |



**LEMAC**  
ENGINEERING

UK / EUROPE

Email: [uksales@lemaconline.com](mailto:uksales@lemaconline.com)

Phone: +44 (0) 1259-751573

Website: [www.LemaOnline.com](http://www.LemaOnline.com)

**LEMAC**  
CORPORATION

US / CANADA

Email: [sales@lemaconline.com](mailto:sales@lemaconline.com)

Phone: 1 (804) 862-8481

**Distributed By:**

(Attach Business Card Here)