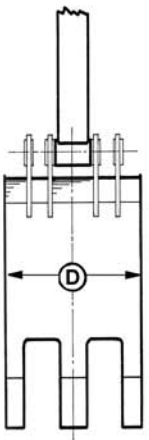
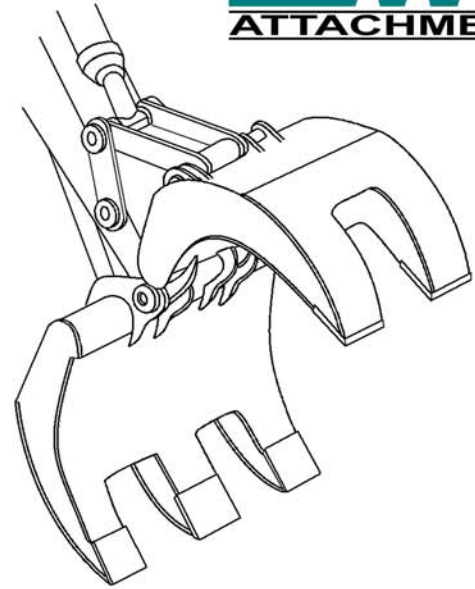
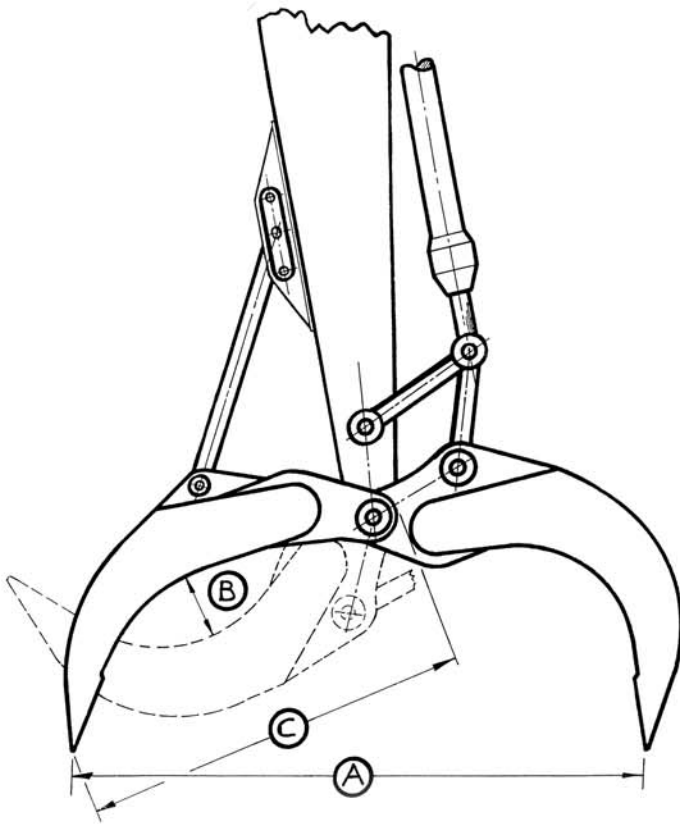
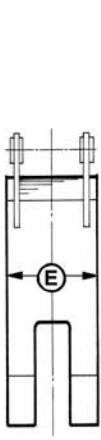




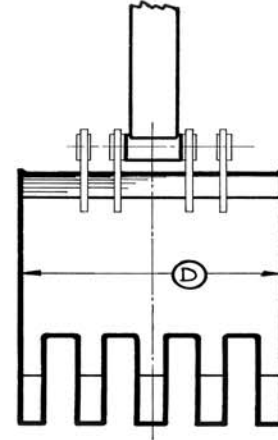
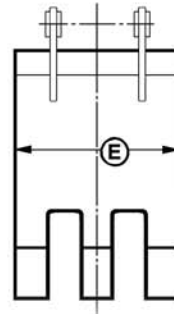
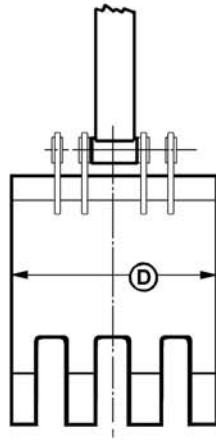
- ✋ **QUENCHED AND TEMPERED ALLOY STEEL 130,000 psi MIN. YIELD (not tensile) 360 - 440 BHN USED IN ENTIRE JAW STRUCTURE OF GRAPPLE**
- ✋ **TINE TIPS - 175,000 psi MIN. YIELD and 450 - 550 BHN.**
- ✋ **HEAVY TUBE SECTIONS FORM UPPER SIDE OF JAWS PROVIDING AN EXTREMELY SOLID BASE FOR BOTH EAR GROUPS**
- ✋ **HEAVY DUTY ALLOY STEEL EAR CONFIGURATION ENSURES RIGIDITY BETWEEN BOTH JAWS IS MAINTAINED.**
- ✋ **HEAT TREATED ALLOY STEEL MAIN PINS**
- ✋ **BEARINGS, SEALS, "O" RINGS AND COLLARS UTILIZED IN MAIN PIVOT PROTECT THIS CRITICAL AREA OF THE GRAPPLE**
- ✋ **LARGE DIAMETER ALLOY STEEL STAY ARM PINS**
- ✋ **CUSTOM TINE CONFIGURATIONS AVAILABLE**
- ✋ **ONE YEAR or 1,500 HOUR WARRANTY**
- ✋ **MANUFACTURED IN VIRGINIA, USA & SCOTLAND, UK**



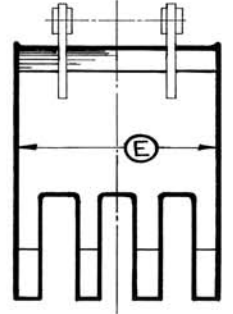
**2 OVER 3
(23)**



**3 OVER 4
(34)**



**4 OVER 5
(45)**



MODEL	MACHINE SIZE		FULLY OPEN (A)		FULLY CLOSED (B)		HEIGHT CLOSED (C)		LOWER JAW WIDTH (D)		UPPER JAW WIDTH (E)		
	UNITS	POUND	KILOGRAM	INCH	MILLIMETER	INCH	MILLIMETER	INCH	MILLIMETER	INCH	MILLIMETER	INCH	MILLIMETER
HDG12-23		20,000 = 30,000	9,072 = 13,608	89	2,261	7.5	190.5	54	1,372	36.0	914.4	24.0	609.6
HDG15-23		30,000 = 40,000	13,608 = 18,144	96	2,438	8.0	203.2	59	1,499	43.5	1,104.9	29.0	736.6
HDG21-23		40,000 = 60,000	18,144 = 27,216	112	2,845	11.0	279.4	69	1,753	45.0	1,143.0	30.0	762.0
HDG30-23		65,000 = 75,000	29,484 = 34,019	115	2,921	11.0	279.4	73	1,854	50.0	1,270.0	32.0	812.8
HDG40-23		80,000 = 110,000	36,287 = 49,895	140	3,556	14.0	355.6	83	2,108	52.0	1,320.8	34.0	863.6
HDG61-23		110,000 = 160,000	49,895 = 72,575	152	3,861	15.0	381.0	91	2,311	60.0	1,524.0	39.0	990.6
HDG100-23		200,000 = 240,000	90,718 = 108,862	170	4,318	20.0	508.0	109	2,769	70.0	1,778.0	45.5	1,155.7
HDG07-34		12,000 = 20,000	5,443 = 9,072	59	1,499	6.0	152.4	45	1,143	32.0	812.8	22.5	571.5
HDG12-34		20,000 = 30,000	9,072 = 13,608	89	2,261	7.5	190.5	59	1,499	36.0	914.4	25.5	647.7
HDG15-34		30,000 = 40,000	13,608 = 18,144	96	2,438	8.0	203.2	59	1,499	45.0	1,143.0	30.0	762.0
HDG21-34		40,000 = 60,000	18,144 = 27,216	112	2,845	11.0	279.4	69	1,753	45.0	1,143.0	30.0	762.0
HDG30-34		65,000 = 75,000	29,484 = 34,019	115	2,921	11.0	279.4	73	1,854	50.0	1,270.0	33.0	838.2
HDG40-34		80,000 = 110,000	36,287 = 49,895	140	3,556	14.0	355.6	83	2,108	52.0	1,320.8	34.0	863.6
TDG12-45		20,000 = 30,000	9,072 = 13,608	89	2,261	7.5	190.5	54	1,372	44.0	1,117.6	34.0	863.6
TDG15-45		30,000 = 40,000	13,608 = 18,144	96	2,438	8.0	203.2	59	1,499	45.0	1,143.0	30.0	762.0
TDG21-45		40,000 = 65,000	18,144 = 29,484	112	2,845	11.0	279.4	69	1,753	55.0	1,397.0	43.0	1,092.2
TDG30-45		65,000 = 85,000	29,484 = 38,555	116	2,946	11.0	279.4	73	1,854	60.0	1,524.0	47.0	1,193.8
TDG40-45		85,000 = 105,000	38,555 = 47,627	140	3,556	14.0	355.6	83	2,108	66.0	1,676.4	51.5	1,308.1

**Facts and figures are for reference only. Custom attachments may differ than specifications listed above.*

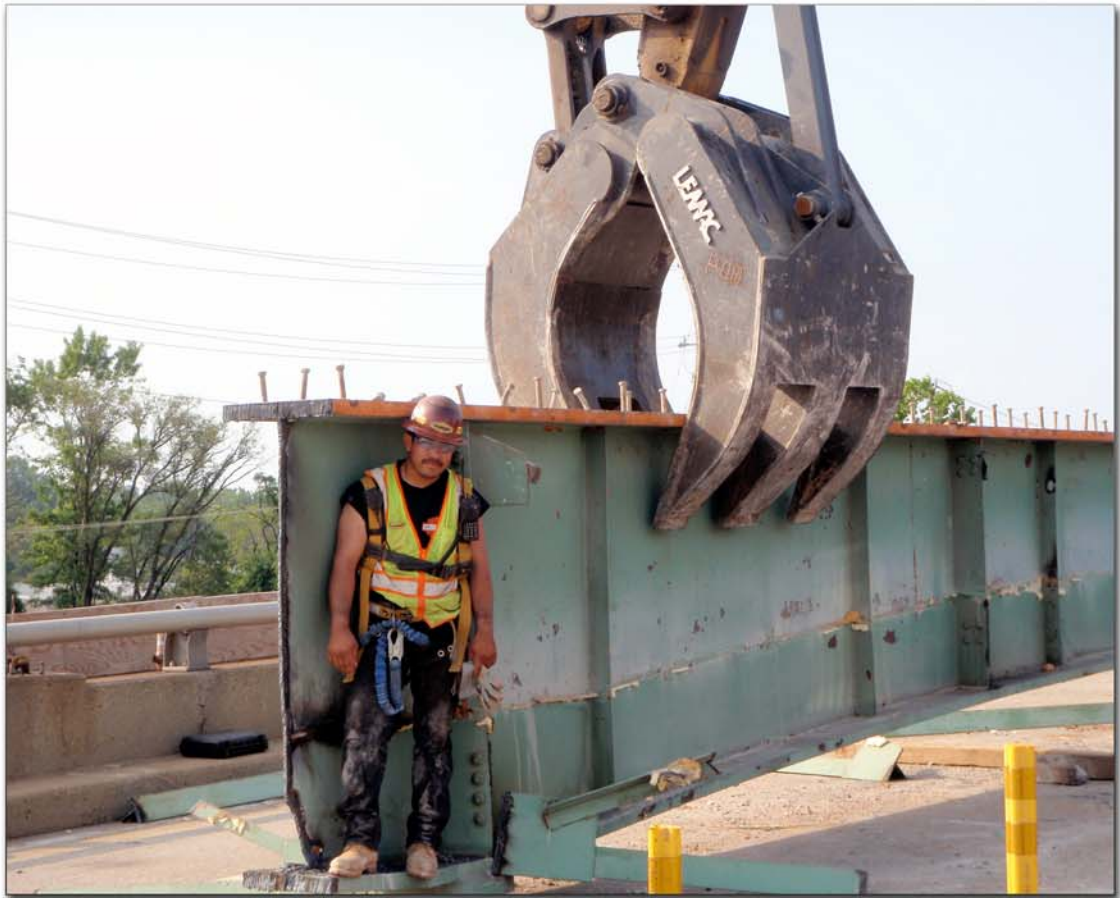


**ONE OF SEVEN GRAPPLES
SENT TO GROUND ZERO IN
THE WEEKS FOLLOWING
SEPTEMBER 11TH TRAGEDY.**





CUSTOM TINE CONFIGURATIONS AVAILABLE!



LEMAG
ENGINEERING

UK / EUROPE

Email: uksales@lemaonline.com

Phone: +44 (0) 1259-751573

Website: www.LemaOnline.com

LEMAG
CORPORATION

US / CANADA

Email: sales@lemaonline.com

Phone: 1 (804) 862-8481

Distributed By:

(Attach Business Card Here)